

## 2011 Program Report Card Update: Resident Trooper Program (Connecticut State Police)

**Quality of Life Result:** *The Resident Trooper Program protects, maintains and enhances the quality of life for all in contracted communities by providing emergency response, policing services and proactive efforts in communities that do not employ full time police departments.*

**The Resident Trooper Program allows for individualized community approaches by designing and employing proactive preventative strategies and responses to criminal activities and quality of life threats and issues:** *Resident Trooper towns have effective police response units at a reduced cost, that respond and addresses criminal conduct, identifies community hazards, provides public safety education and crafts strategies to address illegal activities and hazards.*

**Contribution to Result:** *When a Resident Trooper is assigned, they assume public safety responsibility for the contracting community by responding to emergencies, identifying and addressing public safety risks within the community by; efficient response, crafting proactive preventative strategies and programs to address roadway/highway safety, criminal conduct and threats to the community.*

**Total Program Funding: \$14,598,421    State Funding: \$4,379,527    Federal Funding: \$275,363.00    Town Reimbursement: \$9,943,531.00**

Partners:

### Internal State Police



Partners:

### External

#### Federal Agencies:

FBI, IRS, US Attorney, DEA, ATF, Secret Service, ICE, US Marshals, US Department of Homeland Security, National Guard, Department of State, Federal DOT, NTSB, IRS, Tribal Police Departments, TSA

#### State Agencies:

Dept of Children and Families, Courts, Probation-Parole, Liquor Control, Public Health, Homeland Security, Local Policing Agencies, Department of Corrections, Dept of Transportation, DEEP and Agriculture. Local EMS/Fire Departments

Partners:

### Community \*\*\*

Acceptable and preferred modern methods of policing require the community to become actively involved in a cooperative measure with the police to effectively solve and address crimes and public safety issues in the community.

Neighborhoods and Community Groups  
Schools and Educational Systems  
Business Community  
Faith based / Clergy  
Community / Political  
Non Governmental Agencies  
Community Activists  
Volunteer Groups

**Performance Measure 1:**

Training and additional oversight for the State Police Command Staff, Resident Trooper Supervisors and the Resident Troopers on recent fiscal changes to the program. This training shall also incorporate training that would increase and enhance communications between the Town's Chief Executive Officers, Resident Troopers and the Troop Commanders responsible for the effectiveness of the program.

**Story behind the baseline:** A recent change which altered the way the Resident Trooper Program is billed to the Towns has created significant frustration within the towns. The issue has had unintended consequences. In section 29-5 of the C.G.S it states that "effective July 1, 2011, one-hundred percent of any overtime cost and such portion of fringe benefits directly associated with such overtime cost are billed to the town." This change has put stress between the town CEO's and the Resident Troopers and Barracks Commanders. As a result overtime is closely monitored. What we don't want to see is overtime cost directly affecting the way an investigation is conducted.

**Proposed actions to turn the curve:**

Increase the knowledge of the optional and adaptable aspects of the Resident Trooper Program with the Town CEOs and the Troop Commanders. This will make available the full resources of the State Police and ensure they are considered and utilized when additional policing activities are required in the Resident Trooper Towns.

**Performance Measure 2:**

Establish goals and objectives with the CEOs of the Resident Trooper Towns which include efficiency of the program and effectiveness of personnel assigned to the program. This should be done yearly and monitored quarterly by the Troop Commanders.

**Story behind the baseline:** The Resident Trooper Program is a fascinating and progressive cost effective program that provides a great deal of opportunity within each town. In a recent review of the program it is apparent that the CEOs and Troop Commanders are not communicating effectively to explore some, or many of the flexible options associated with the program. Different ideas can and should be explored by the Commanding Officers and the Town CEO's. Some ideas such as flex scheduling, shift changes and utilizing Troop patrol personnel are being consistently considered to help policing within the Resident Troopers towns.

**Proposed actions to turn the curve:**

Resident Trooper Workshops with the Towns Chief Executive Officers (CEOs) the Troop Commanders, District Commanders and the Commanding Officer of the State Police Field Operations (Lieutenant Colonel). The workshops would explore what resources are currently contracted and what current duties are being performed. It would also explore what additional duties may, or at times, are necessary and explore options that may include overtime, or other schedule adjustments to effectively operate the program within a town. This would also allow for the agency to establish better lines of communications for Town CEO's to communicate with the Barracks Commanders when issues arise.

**Performance Measure 3:**

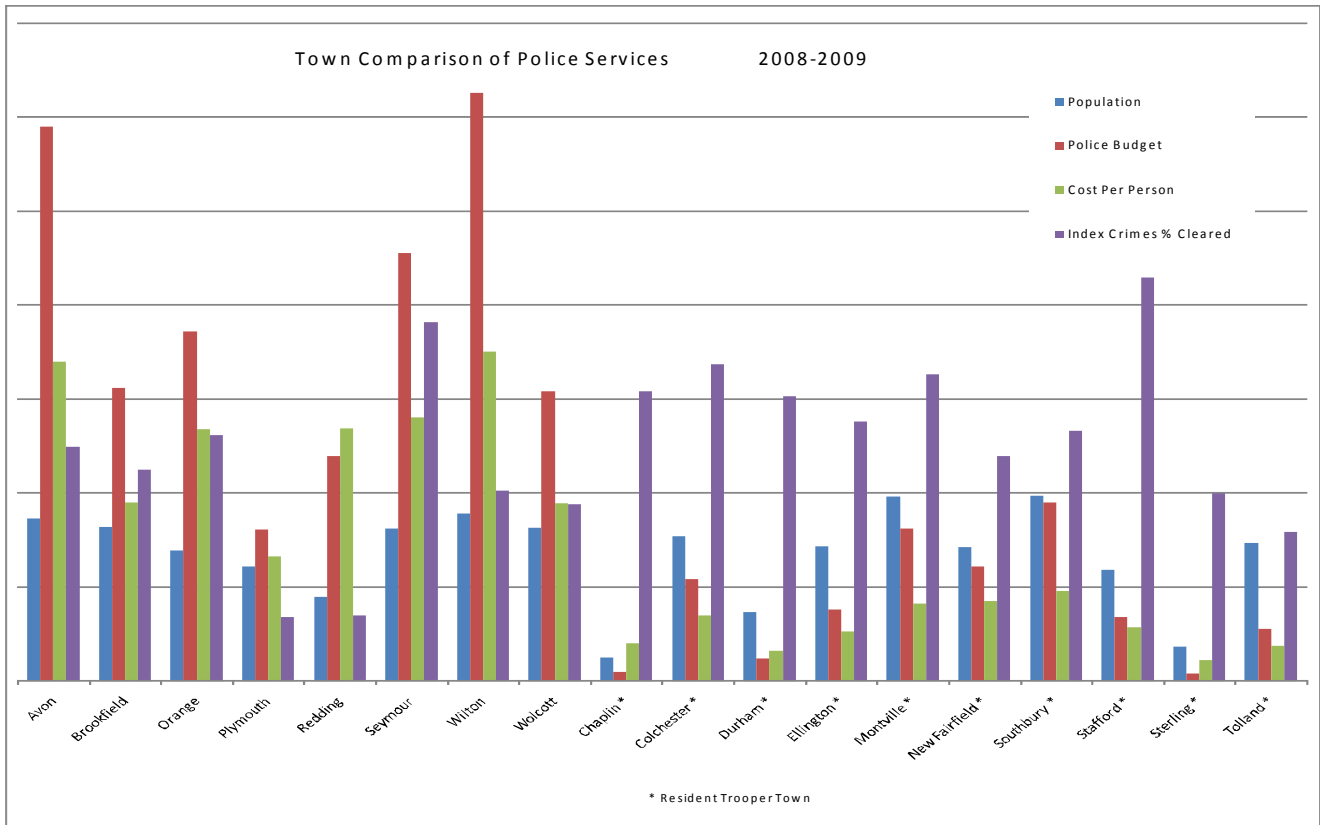
A review of the above Graphs and Charts for Town Comparisons of Police Services for the years 2010-2011 indicates the following:  
Towns without Resident Troopers that employ full time police departments pay a significantly higher rate for police services and employ significantly more personnel at a much higher cost.

**Story behind the baseline:** With the significant additional cost associated with independent police departments (**red lines in graphs**), the numbers of part 1 index crimes reported to the FBI do not reflect a positive correlation, or influence, on the cases solved (**purple lines in graphs**), or resolved in the State. Towns with Resident Troopers have a much lower cost and a more efficient solve or resolve rate of the part 1 index crimes reported to the FBI.

**Proposed actions to turn the curve:**

The amount of solved or resolved rate with independent police departments can have a correlation with the various priorities of each individual community. Some communities put more of an emphasis on patrol visibility, police response, community policing and others on the solving of criminal conduct.

The Resident Trooper Program conforms to the agencies expectation of solving part 1 FBI reportable crimes. This is an agency priority and is best accomplished when the Resident Trooper commits to and effectively works with the community. Patrol Troopers and the Detectives from the other various State Police units provide additional resources and investigation on each of these crimes.



\* = Town with the Resident State Trooper Program

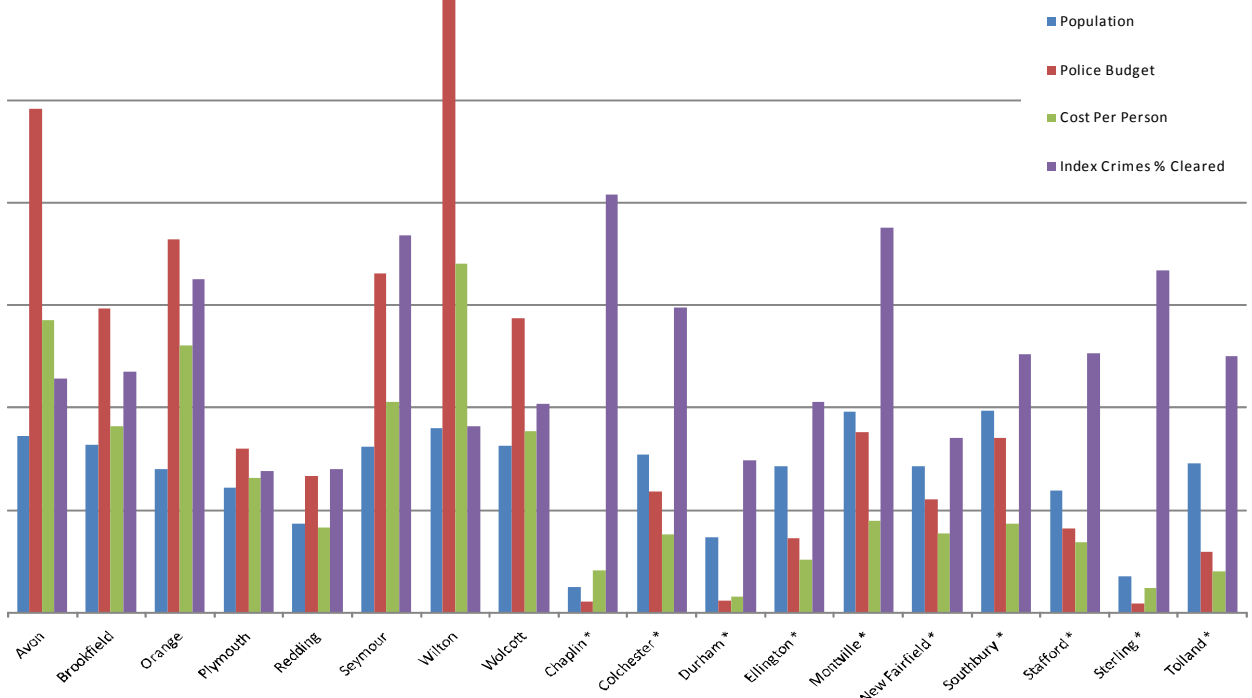
Source documents: State Police and CT Office of Policy Management, Intergovernmental Policy Division (2007/2008 Budgets)

Dept. Of Public Safety Uniform Crime Reports.

Index Crimes include murder, rape, robbery, aggravated assault, burglary, larceny and motor vehicle theft.

2007-08 Population Estimates from the Connecticut State Register and Manual.

Town Comparison of Police Services 2007-2008



\* Resident Trooper Town

**COMPARISON OF POLICE BUDGETS, TOWNS AND STAFF**

Town	Population	Police Budget	Cost / Person	Index Crimes			Square Miles	Road Miles	Full-Time Sworn -State	Full-Time Sworn-Town
				Offenses	Clearances	% cleared				
Avon	18,145	\$5,898,442.00	\$325.07	180	47	26.10%	23.5	100.88	0	35
Brookfield	16,470	\$3,588,659.00	\$217.89	174	37	21%	20.4	98.88	0	33
Chaplin *	02,311	\$112,365.00	\$48.62	12	4	33%	19.6	37.57	1	0
Colchester	16,092	\$2,077,258.00	\$129.08	158	49	31.00%	49.9	113.62	1	10
Durham *	07,406	\$185,174.00	\$25.00	69	17	24.60%	23.8	59.65	1	0
Ellington *	15,679	\$750,786.00	\$47.88	80	20	25.00%	34.6	90.36	5	0
Montville *	19,594	\$1,578,028.00	\$80.53	169	50	29.60%	44.1	119.12	1	23
New Fairfield *	13,871	\$1,243,850.00	\$89.67	76	18	23.70%	25.1	66.16	7	5
Orange	13,968	\$4,092,776.00	\$293.01	457	138	30.20%	17.4	108.03	0	43
Plymouth	12,246	\$1,715,860.00	\$140.11	194	34	17.50%	22.3	82.38	0	25
Redding	09,174	\$1,479,605.00	\$161.28	49	5	10.20%	32.1	92.79	0	15
Seymour	16,556	\$4,912,870.00	\$296.74	243	39	16.00%	15	79.9	0	42
Southbury *	19,943	\$1,867,539.00	\$93.64	161	42	26.10%	40	131.84	1	18
Stafford *	12,097	\$688,550.00	\$56.91	77	28	36.40%	58.8	115.78	5	2
Sterling *	03,848	\$82,339.00	\$21.39	35	9	25.70%	27.3	47.1	1	0
Tolland *	15,086	\$609,527.00	\$40.40	91	24	26.40%	40.3	129.06	5	0
Wilton	18,053	\$6,534,997.00	\$361.98	107	11	10.30%	27.4	127.18	0	42
Wolcott	16,692	\$3,130,143.00	\$187.52	268	47	17.50%	21.1	90.03	0	24

\* = Town with the Resident State Trooper Program

Source documents: State Police and CT Office of Policy Management, Intergovernmental Policy Division (2007/2008 Budgets)  
 Dept. Of Public Safety Uniform Crime Reports.

